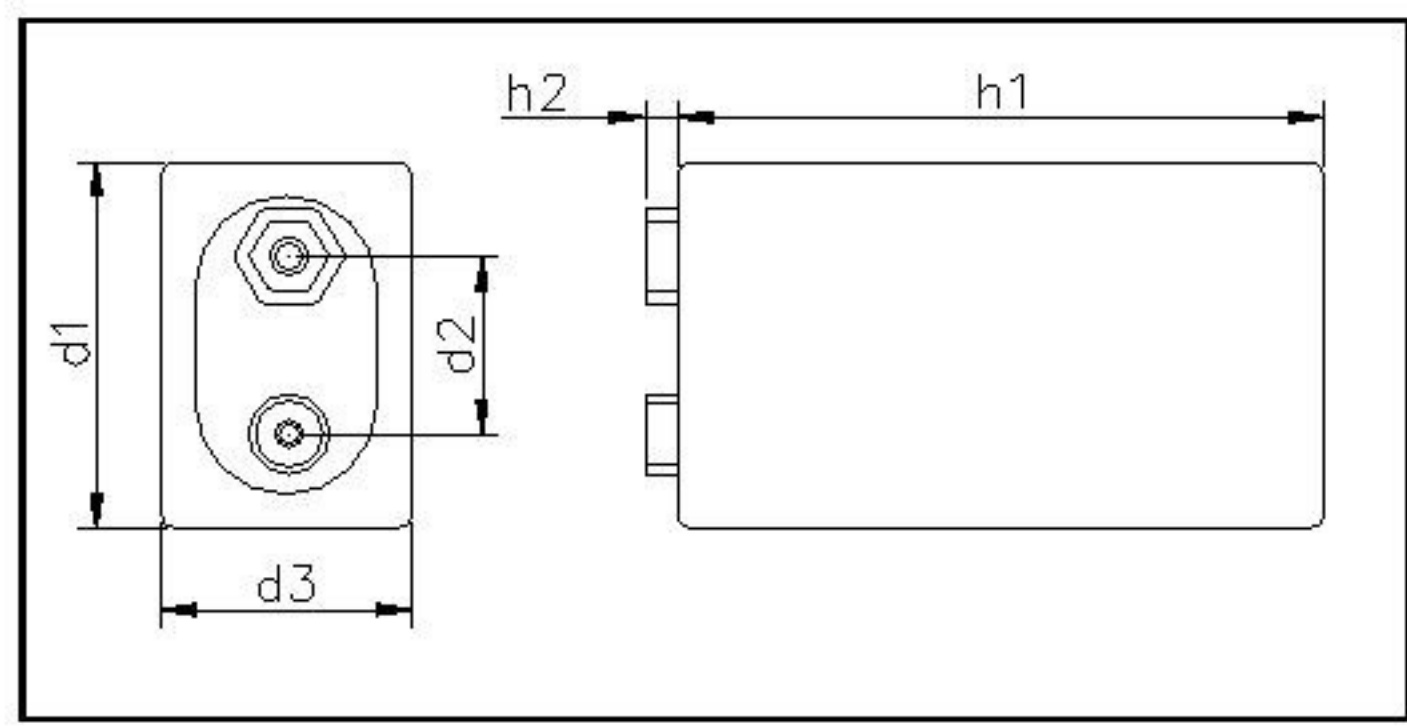
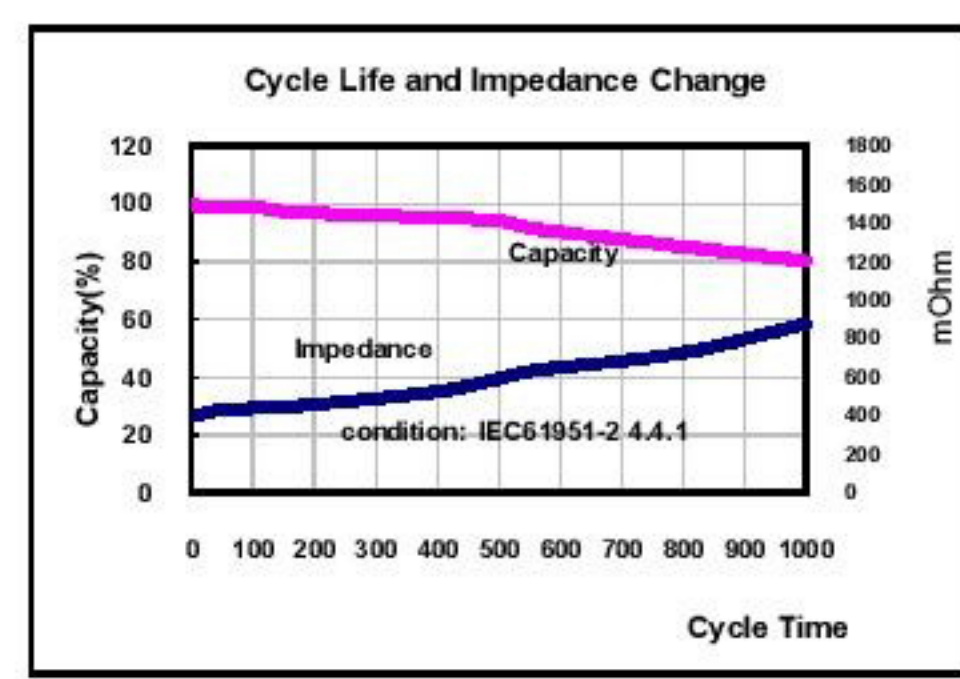
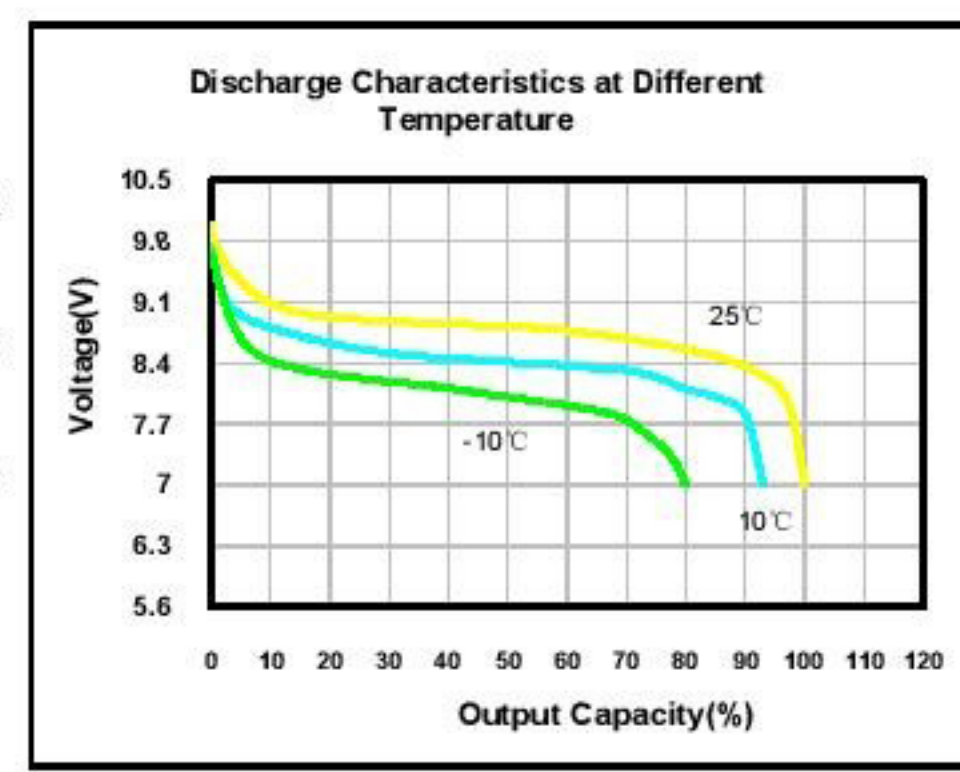
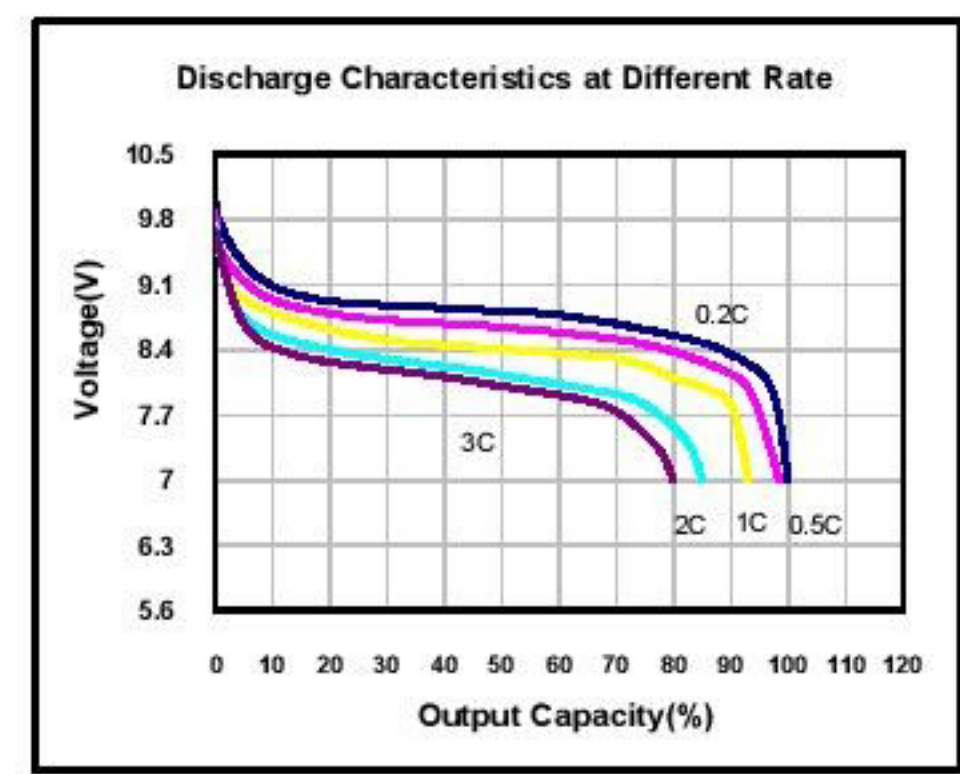
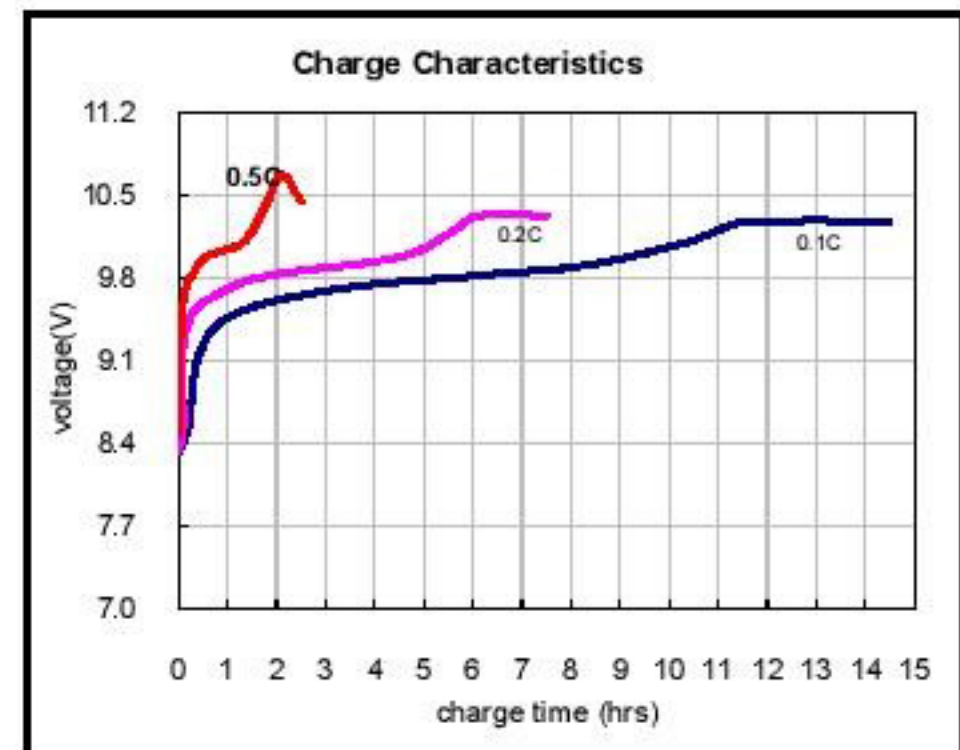


<b>nominal voltage</b>	8.4V	conditions
<b>max. charge voltage</b>	10.5 V	at standard charge (0.1C/20°C)
<b>capacity</b>		
nominal	200 mAh	discharge at 0.2C
minimal	200 mAh	discharge at 0.2C
typical	210mAh	7.0V end discharge voltage ambient temperature 20°C discharge at 0.2C
<b>Low Temperature Discharge</b>	>150mAh	discharged at 0.2C at -10°C
<b>max. discharge current</b>	600 mA	ambient temperature 20...50°C
<b>charge</b>		
standard charge	charge current 20 mA	charge time 15hrs at 20°C
quick charge	60 mA	4 hrs for empty battery
recommended charge	-dV	0...70mV
termination control parameters		
trickle charge current	6...10 mA	(recommended)
<b>Charge retention</b>	>180mAh	discharge at 0.2C after storage 28 days at 20+/-5°C
	>160mAh	discharge at 0.2C after storage 6 months at 20+/-5°C
	>120mAh	discharge at 0.2C after storage 12 months at 20+/-5°C
<b>internal resistance</b>	<400 mOhms	at 1000Hz battery fully charged
<b>life expectancy</b>	>500 cycles	IEC61591-2 standard
<b>ambient temperature range</b>	0...45°C 10...45°C -20...50°C -10...45°C -10...35°C	standard charge fast charge discharge storage less than 3 months storage less than 1 year



**mechanical specifications**

cell dimensions (with sleeve)	
length h1	48.5-1.0 mm
length h2	2.9mm
width d1	26.2-0.5 mm
width d2	12.5mm
thickness d3	16.5-0.5 mm
weight	approx. 51.5 g

DATA SHEET FOR	Ni-MH instant PP3
VAPEXTECH DRAWING	in200PP3
DRAWN BY / DATE	Herry Li/2009/02/20

Manufacturer reserves the right to alter or amend the design, model and specification without prior notice.